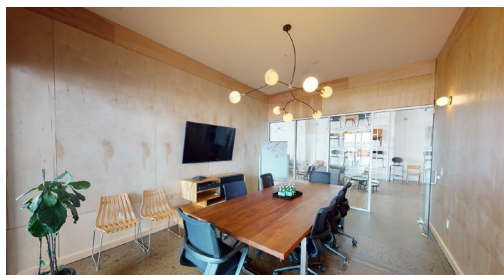
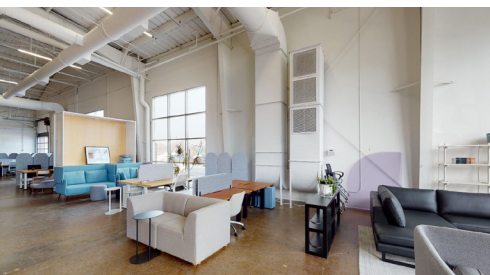
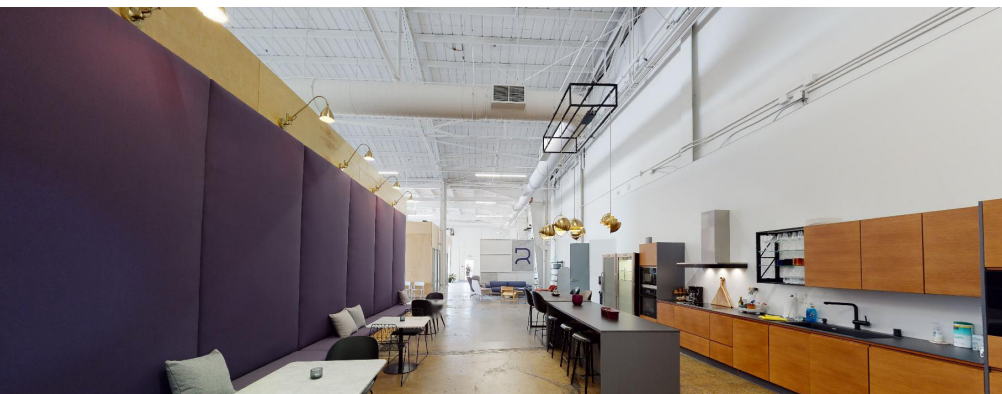




**9TH
STREET
CENTER**

PREMIERE VACANCY

SUITE 195 @ 701 9TH STREET - OFFICE/SHOWROOM



12,889 square feet available: 7,082 SF of office/showroom space and 5,807 SF of warehouse. On the East end of the campus, this space has high ceilings, stunning natural light, operable glass garage doors, and poured concrete floors. It features multiple huddle and conference rooms, as well as a sleek, modern kitchen and numerous gathering spaces, and has a private entrance adjacent to abundant surface parking. Suite 193 can be used for warehouse or storage and has access from Suite 195, as well as one oversized (14' X14') drive-in door.

- 1st floor
- 7,082 SF office/showroom
- Kitchen, showroom + multiple offices
- 5,807 SF warehouse/storage
- (1) 14' X 14' oversized drive-in door
- FREE parking & direct entrance
- Only minutes to DTWN MPLS
- Near Hennepin Ave & I-35W

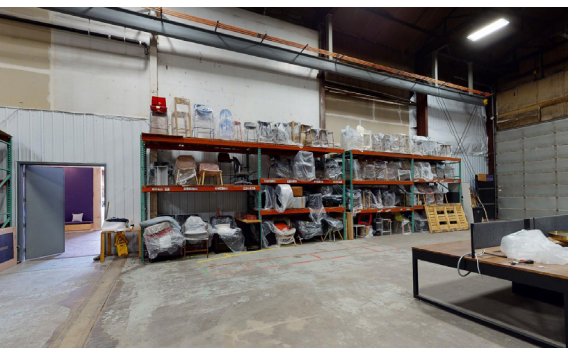


HILLCREST
DEVELOPMENT, LLLP

9TH
STREET
CENTER

PREMIERE VACANCY

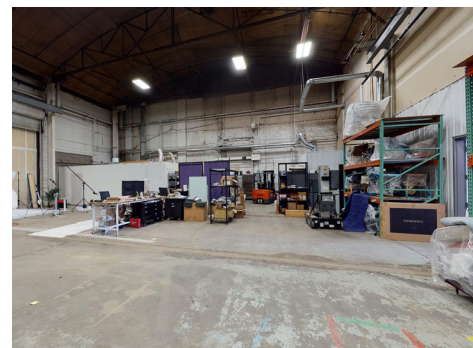
SUITE 193 @ 701 9TH STREET - WAREHOUSE



Direct access/entrance to warehouse from office/showroom



1 oversized (14' X 14') drive-in door



24' clear height ceilings

LEARN MORE ABOUT 9TH STREET CENTER & TAKE A VIRTUAL TOUR OF SUITE 193 & 195
WWW.9THSTREETCENTER.COM

OR GET IN TOUCH WITH OUR DEVELOPMENT & LEASING TEAM TO SET UP A PRIVATE TOUR TODAY!

CHARLIE NESTOR

CHARLIEN@HILLCRESTDEVELOPMENT.COM

DIRECT: 612.623.2475

CELL: 612.220.7356

JOE KLEIN

JOEK@HILLCRESTDEVELOPMENT.COM

DIRECT: 612.623.2470

CELL: 612.799.4145

HILLCREST
DEVELOPMENT, LLLP