

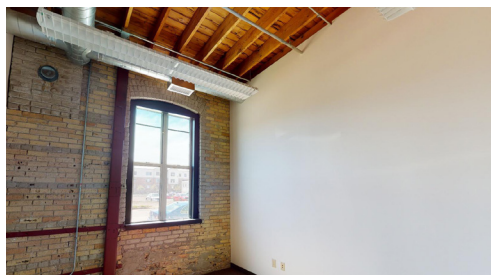


PREMIERE VACANCY

SUITE 115 @ 635 9TH STREET



Suite 115 has high timber ceilings, stunning natural light, original brick and steel features and poured concrete floors. This 3,127 square foot suite is a one-of-a-kind space- ideal for creative office or retail! The space has views of the popular Minneapolis Cider Company patio and offers the opportunity for a direct entrance off of 9th St.



- 1st floor - 3,127 square feet
- Creative office/studio or retail
- Ability to add private entrance
- Fully customizable
- FREE parking
- Only minutes to DTWN MPLS
- Near Hennepin Ave & I-35W



HILLCREST
DEVELOPMENT, LLLP



LEARN MORE ABOUT 9TH STREET CENTER & TAKE A VIRTUAL TOUR OF SUITE 115
WWW.9THSTCENTER.COM



OR GET IN TOUCH
 WITH OUR
 DEVELOPMENT
 & LEASING TEAM
 TO SET UP A PRIVATE
 TOUR TODAY!

CHARLIE NESTOR
 CHARLIEN@HILLCRESTDEVELOPMENT.COM
 DIRECT: 612.623.2475
 CELL: 612.220.7356

JOE KLEIN
 JOEK@HILLCRESTDEVELOPMENT.COM
 DIRECT: 612.623.2470
 CELL: 612.799.4145