



**9TH
STREET
CENTER**

PREMIERE VACANCY

SUITE 105 @ 635 9TH STREET



Suite 105 has high timber ceilings, stunning natural light, original brick and steel features and poured concrete floors. This 5,085 square foot suite is a truly a one-of-a-kind space- ideal for creative office or retail! The space has views of the popular Minneapolis Cider Company patio and offers the opportunity for a direct entrance off of 9th Street!

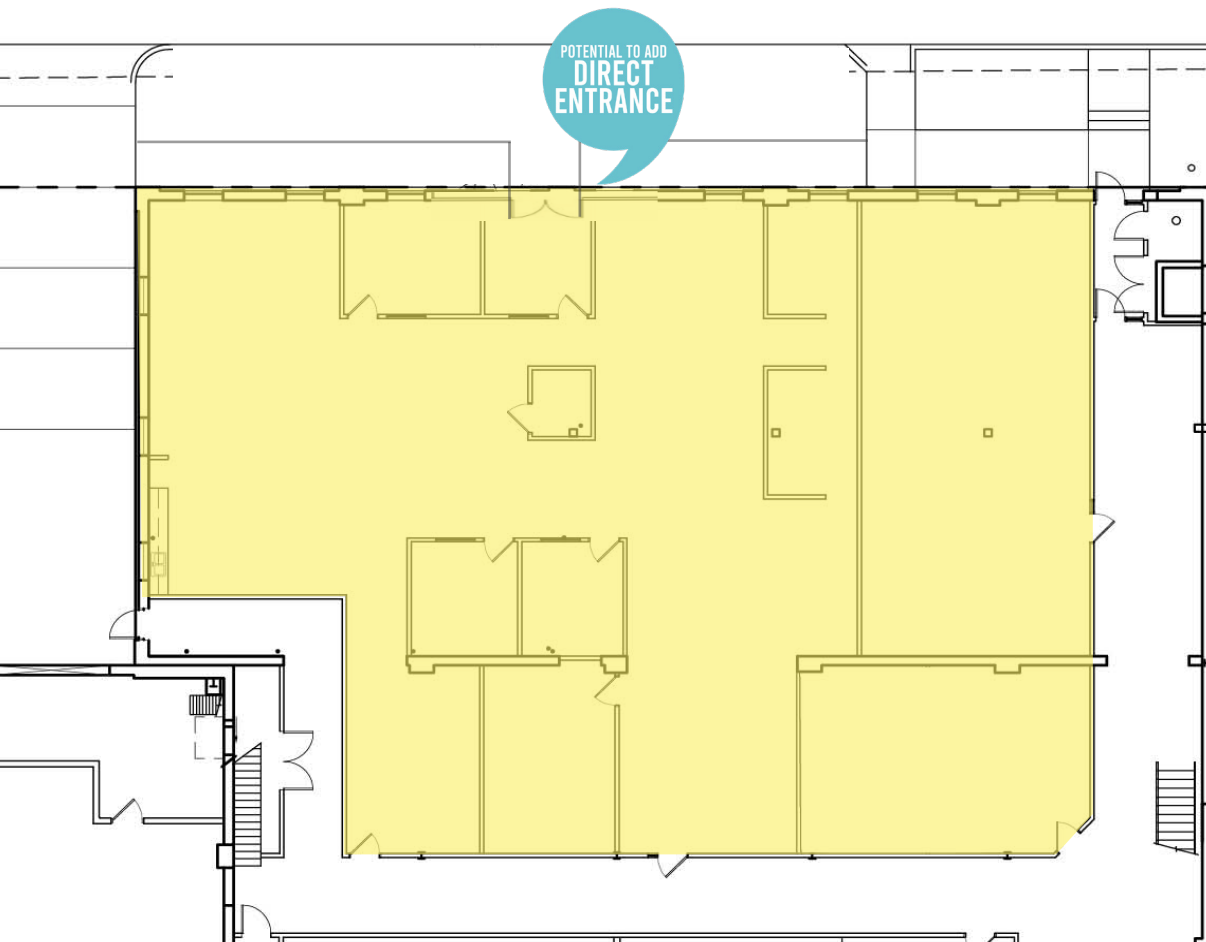


- 1st floor - 5,085 square feet
- Creative office/studio or retail
- Ability to add private entrance
- Kitchenette + multiple offices
- Fully customizable
- FREE parking
- Only minutes to DTWN MPLS
- Near Hennepin Ave & I-35W



**SUITE
105!**

HILLCREST
DEVELOPMENT, LLLP



**9TH
STREET
CENTER**

LEARN MORE ABOUT 9TH STREET CENTER & TAKE A VIRTUAL TOUR OF SUITE 105
WWW.9THSTCENTER.COM



OR GET IN TOUCH
 WITH OUR
 DEVELOPMENT
 & LEASING TEAM
 TO SET UP A PRIVATE
 TOUR TODAY!

CHARLIE NESTOR
 CHARLIEN@HILLCRESTDEVELOPMENT.COM
 DIRECT: 612.623.2475
 CELL: 612.220.7356

JOE KLEIN
 JOEK@HILLCRESTDEVELOPMENT.COM
 DIRECT: 612.623.2470
 CELL: 612.799.4145

HILLCREST
 DEVELOPMENT, LLLP