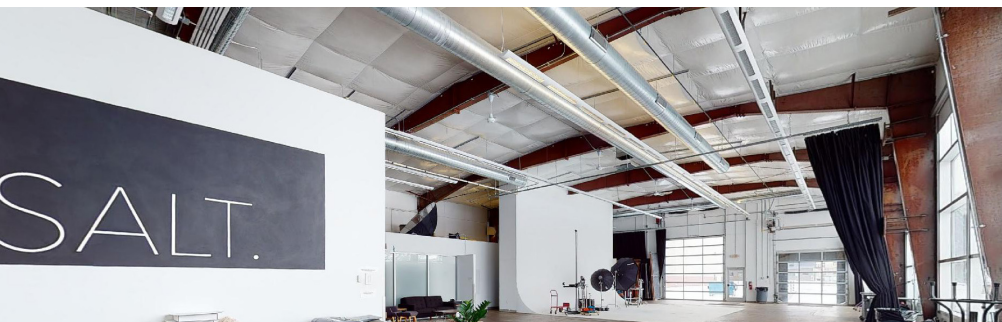


9TH
STREET
CENTER

PREMIERE VACANCY

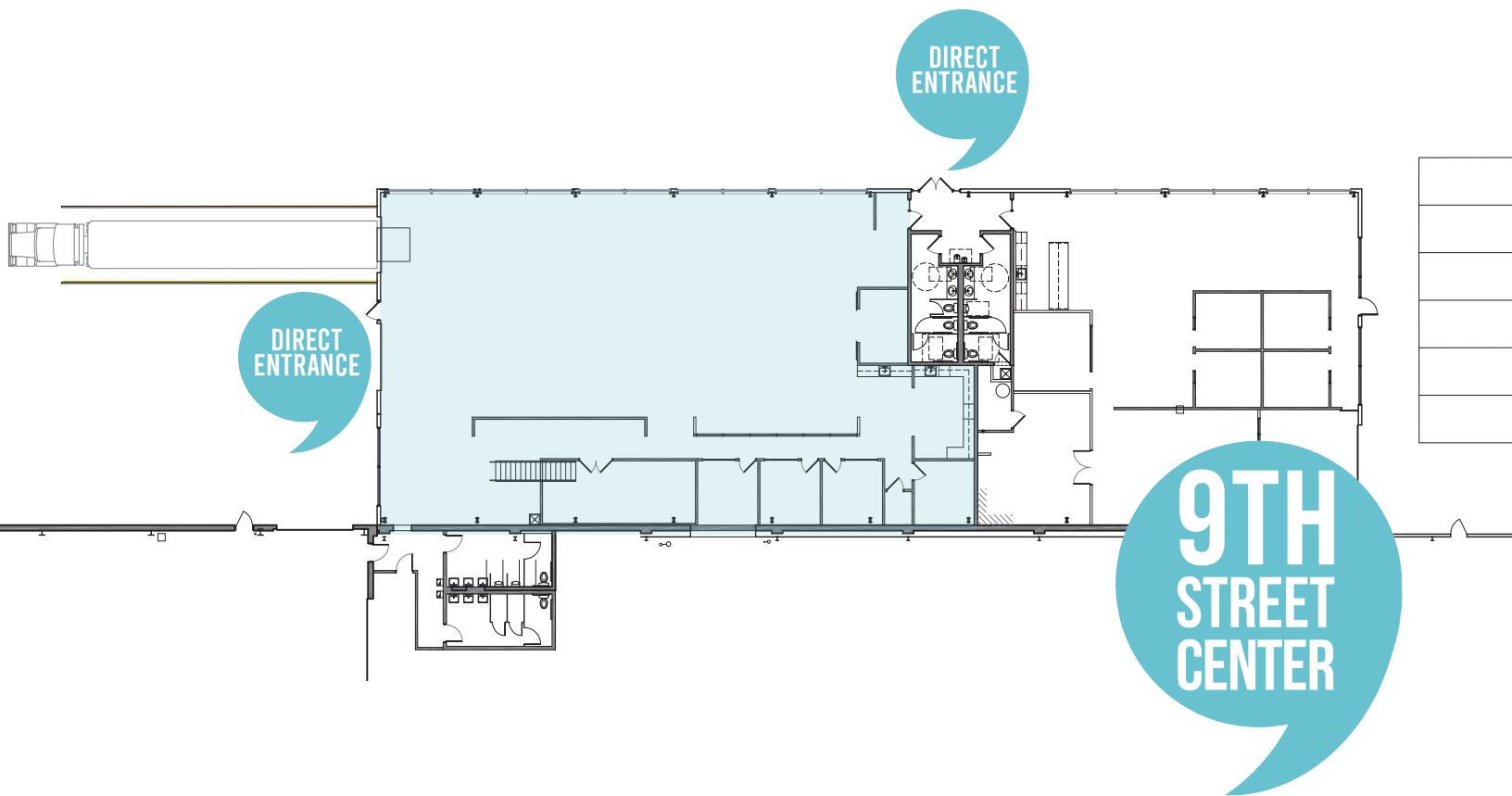
SUITE 25 @ 575 9TH STREET



Suite 25 is a prime (1st floor) 6,464 SF corner suite located in the West end of 9th Street Center (corner of E. Hennepin & 8th Avenues) features impressive glass curtain-walls and two operable glass “garage” doors, polished concrete floors and a large kitchen designed for catering/groups. Previously used as a commercial photography studio, but it’s an ideal location for retail. Ample free parking and two direct entrances into the space from adjacent surface parking lot.

- 1st floor - 6,464 square feet
- 2 operable glass “garage” doors
- 2 direct entrances
- Fully customizable
- FREE parking
- Only minutes to DTWN MPLS
- Near Hennepin Ave & I-35W

HILLCREST
DEVELOPMENT, LLLP



LEARN MORE ABOUT 9TH STREET CENTER & TAKE A VIRTUAL TOUR OF SUITE 25
WWW.9THSTREETCENTER.COM



OR GET IN TOUCH
WITH OUR
DEVELOPMENT
& LEASING TEAM
TO SET UP A PRIVATE
TOUR TODAY!

CHARLIE NESTOR
CHARLIEN@HILLCRESTDEVELOPMENT.COM
DIRECT: 612.623.2475
CELL: 612.220.7356

JOE KLEIN
JOEK@HILLCRESTDEVELOPMENT.COM
DIRECT: 612.623.2470
CELL: 612.799.4145

HILLCREST
DEVELOPMENT, LLLP