

- Storefront glass, glass overhead doors
- Centrally located in NE Minneapolis near I-35W and East Hennepin Avenue
- 11' – 17' Ceiling Heights (with no columns)
- Free, plentiful parking



For information regarding leasing or renovations at 575 9th Street SE, please contact:

Joe Klein 612-623-2470

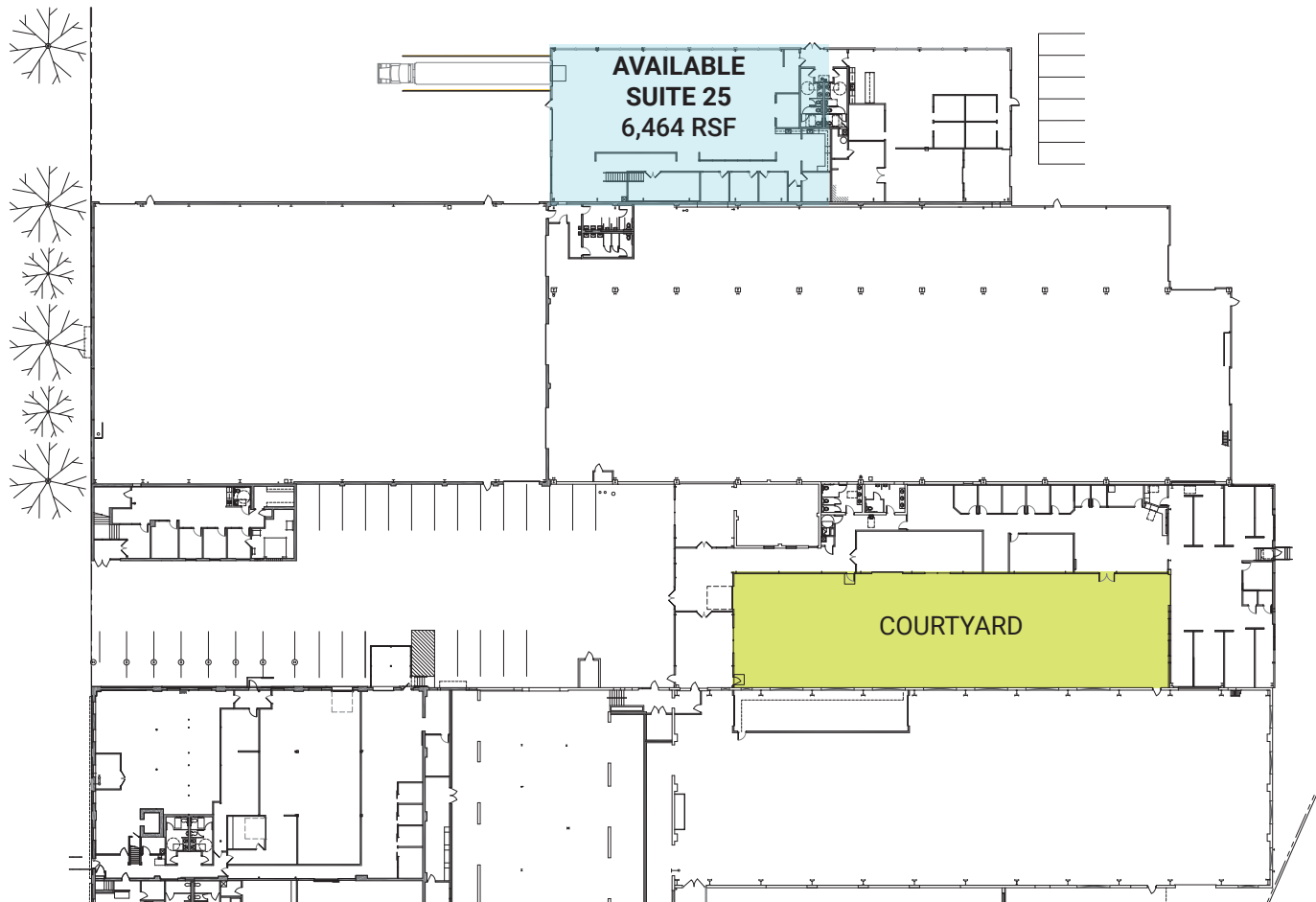
JoeK@hillcrestdevelopment.com

or

Charlie Nestor 612-623-2475

CharlieN@hillcrestdevelopment.com

[hillcrestdevelopment.com](http://hillcrestdevelopment.com)



first floor

575 9th Street SE  
Minneapolis, MN 55414

- Storefront glass, glass overhead doors
- Centrally located in NE Minneapolis near I-35W and East Hennepin Avenue
- 11' – 17' Ceiling Heights (with no columns)
- Free, plentiful parking



For information regarding leasing or renovations at 575 9th Street SE, please contact:

Joe Klein 612-623-2470

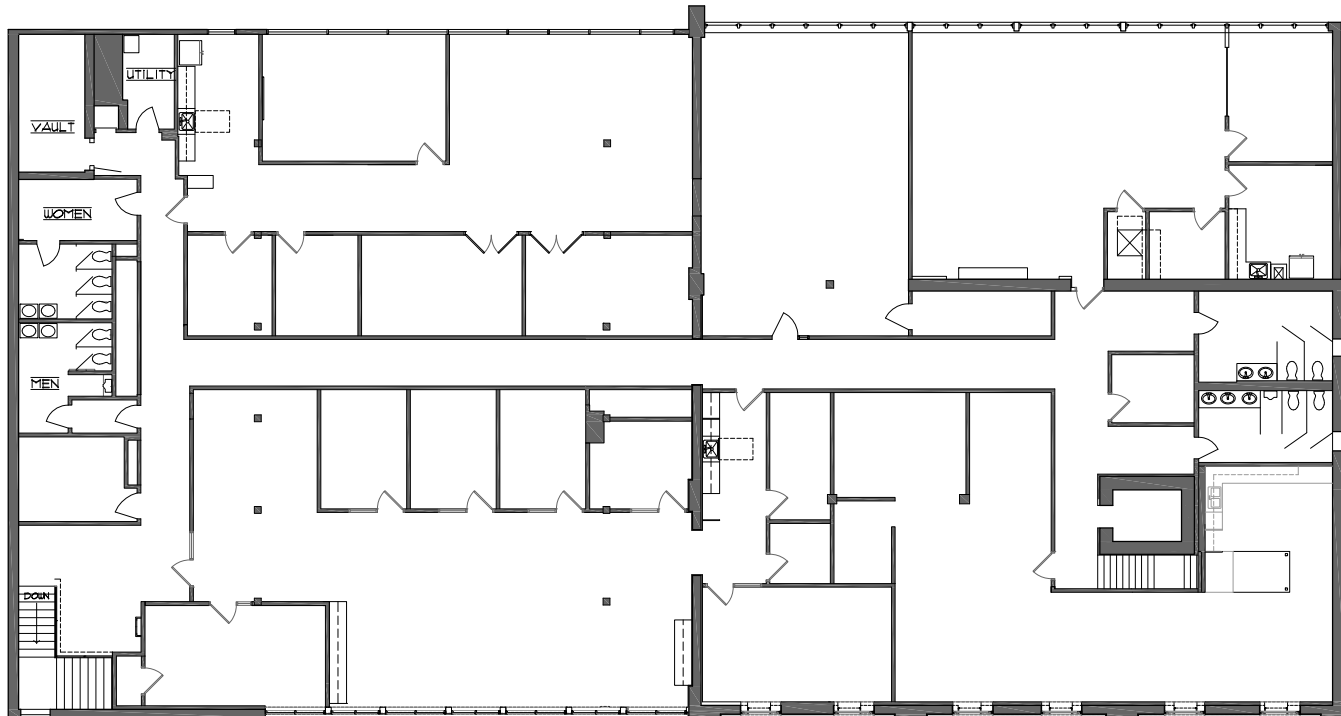
JoeK@hillcrestdevelopment.com

or

Charlie Nestor 612-623-2475

CharlieN@hillcrestdevelopment.com

[hillcrestdevelopment.com](http://hillcrestdevelopment.com)



second floor

575 9th Street SE  
Minneapolis, MN 55414